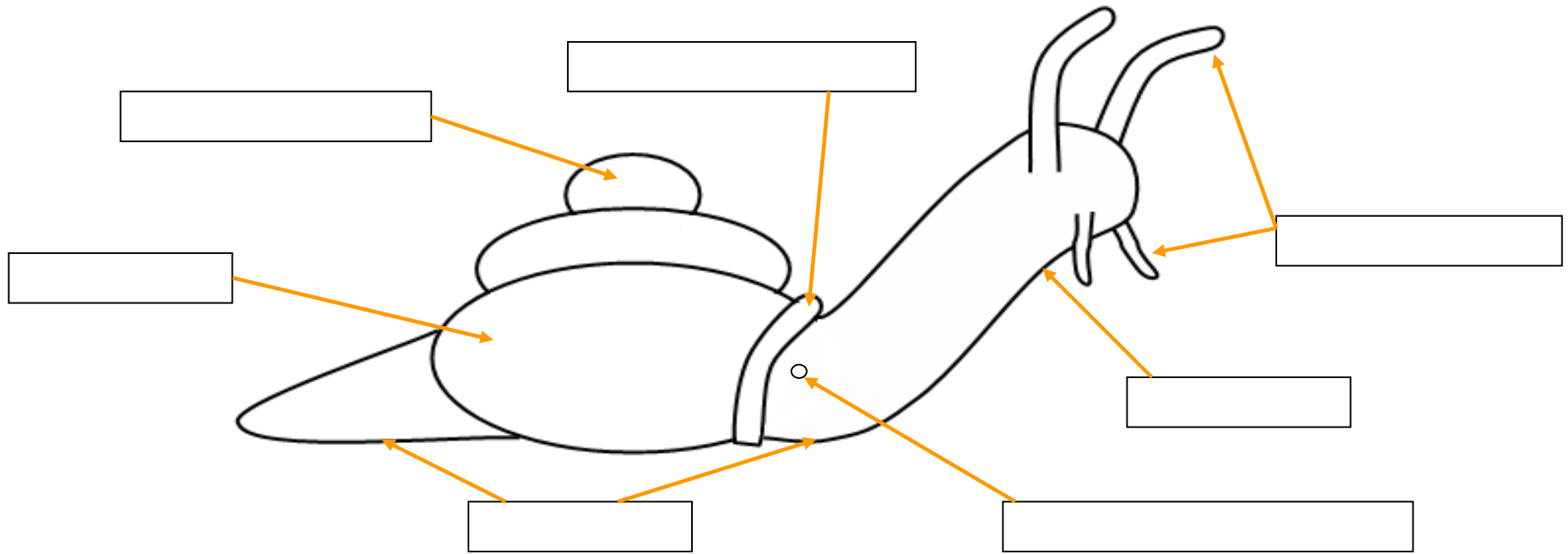


PARTS OF A SNAIL



Name the parts of the snail:

Foot

Mouth

Respiratory pore

Shell

Tentacles

Shell apex

Shell lip

Top snail fact!
 The soft body inside the shell is spiral shaped, just like the shell. This is where the snail keeps its internal organs, like its heart and liver

Foot: The soft, muscular part of the snail that allows the snail to move

Shell: The hard, spiral, protective covering of the snail

Shell apex: The tip of the shell

Mouth: On the underside of the head, it contains the radula, a file-like tongue that breaks down the snail's food



© Peter Skelton



© Peter Skelton

Tentacles: Two retractable pairs, on the upper surface of the snail's head, used to help the snail feel things. The eyes are located at the tips of the upper, long pair of tentacles; the lower pair are concerned with smell.

Respiratory pore: A small hole in the side of the body, used for breathing

Shell lip: The edge of the shell

Go to www.evolutionmegalab.org to see if you were right and find out how to take part in your very own snail hunt!

Supported by:

